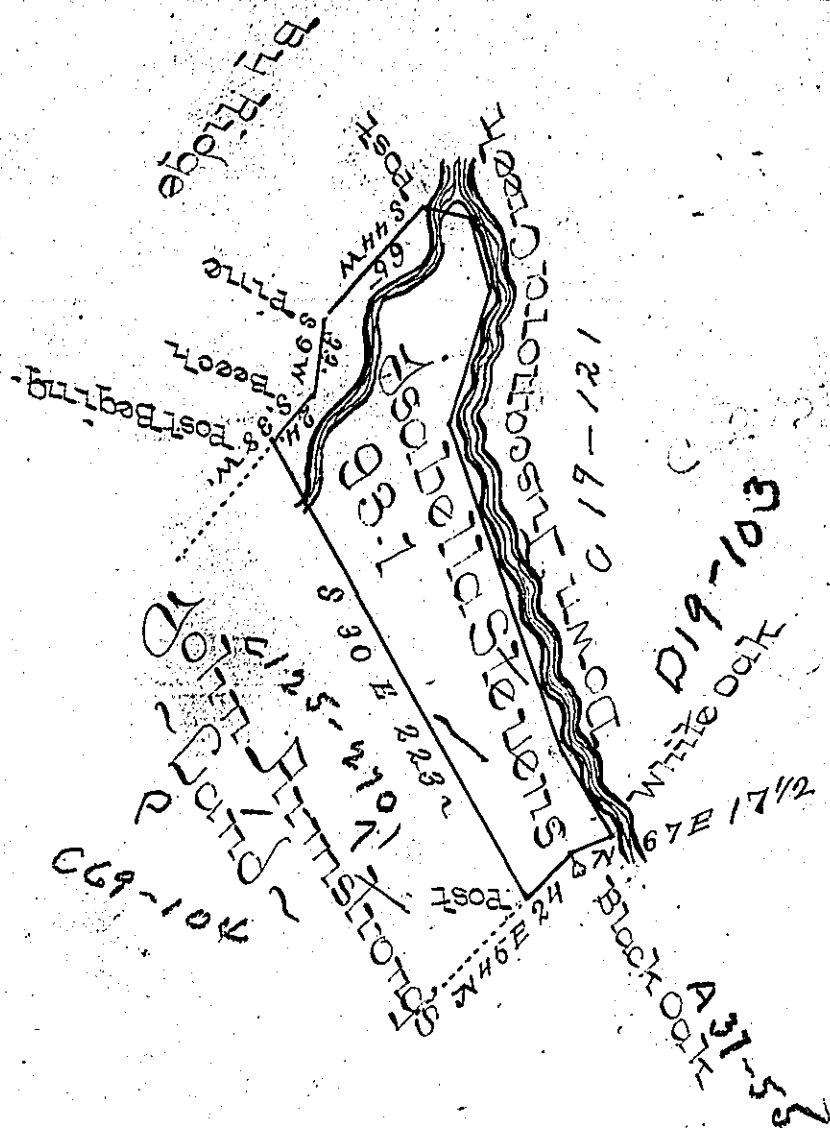


Courses and Distances
Down Tuscarora

N 29 W 40
 N 20 W 150
 N 15 E 60
 N 15 W 30
 N 74 W 17
297



The Draught of a Tract of Land called
 Situate on Tuscarora Creek in the County of Cum-
 berland containing Ninety Three Acres 20 Per-
 ches with Allowance proportionate to Six Acres
 Per Cent for Roads Survey'd the 20th day of October
 Anno Dom: 1767 In Pursuance of an Order of Sur-
 vey to Isabella Stevens Bearing Date at Philad^a
 the 26th day of August Anno Dom: 1766 No 979

To John Lukens Esq Secy } P. W. MacLay DS
 of Pennsylvania

IN TESTIMONY that the above is a copy of the original remaining on file in the
 Department of Internal Affairs of Pennsylvania, made con-
 formably to an Act of Assembly approved the 16th day of
 February, 1833, I have hereunto set my Hand and caused
 the Seal of said Department to be affixed at Harrisburg, this

Third day of August 1897

James W. Patton
 Secretary of Internal Affairs.